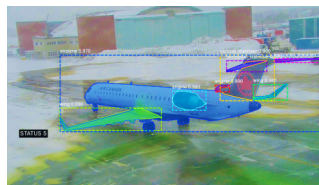
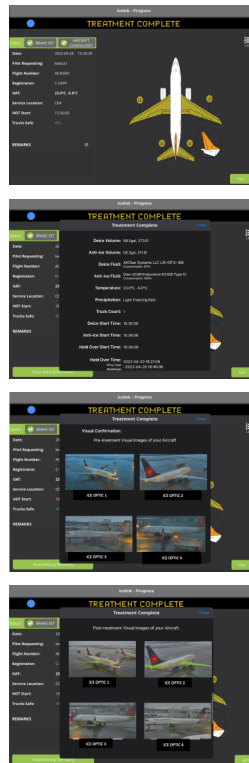


Headline:

# “ICE OPTICS - ICE DETECTION TECHNOLOGY UPDATE from JCAII”

After many years of development and field testing we are pleased to report that in addition to good ice detection baseline information gathering and continuance of our advanced model training, that JCAII now has the capability to put images to the ICELINK® flight deck EFB and dispatch of the pre and/or post treatment (real time) in sync with the operational process through ICELINK®.

This Benchmark will provide the pilots with the ability to visually confirm treatment, along with better and enhanced treatment compliance for reporting . Images through the EFB (along with the most comprehensive and safest post Deicing report information) is available for this upcoming season.



Our work continues with developing Ice detection technology. JCAII has developed advanced optics, segmentation technology along with ML, AI, coupled with IR in pursuit of reliable and consistent contamination detection. We will keep the industry updated with our progress.

We would like to thank IDS for their cooperation and operational support of us at YOW.



all rights reserved 2023



[www.JCAII.com](http://www.JCAII.com)